

POSitive For Windows - The Dog Pound - Station: 1

File Edit Register Inventory Management Marketing Accounting Utilities Window Help

POSitive for Windows

Manager Console

The Dog Pound 11/28/2006 4:25 PM

Register [F2] Management [F3] Inventory [F4] Purchase [F5] RMA [F6] E-Commerce [F7]

Inventory... Maintenance... Valuation Report [*1]
 Stock Report [*2]
 Price Report [*3]
 Promo Pricing [*4]

1 Inventory... ^1 Departments
 2 Templates ^2 Categories
 3 Matrix ^3 Vendors
 4 Coupon Manager ^4 Vendor Inventory
 5 Promo Manager ^5 Global Changes
 6 Used Items Manager ^6 Serial Number List
 ^7 Quantity Equations
 ^8 Mix & Match

Customers [F8]
 Inventory [F9]
 Vendors [^F9]
 Open Register [F10]
 Report Center [^R]

Logged In: POS
 Secure Log Out [^/] Clock In/Out [Shift F11]
 November 2006
 Today

S M T W T F S
 1 2 3 4
 5 6 7 8 9 10 11
 12 13 14 15 16 17 18
 19 20 21 22 23 24 25
 26 27 28 29 30

POSITIVE SUPPORT NET

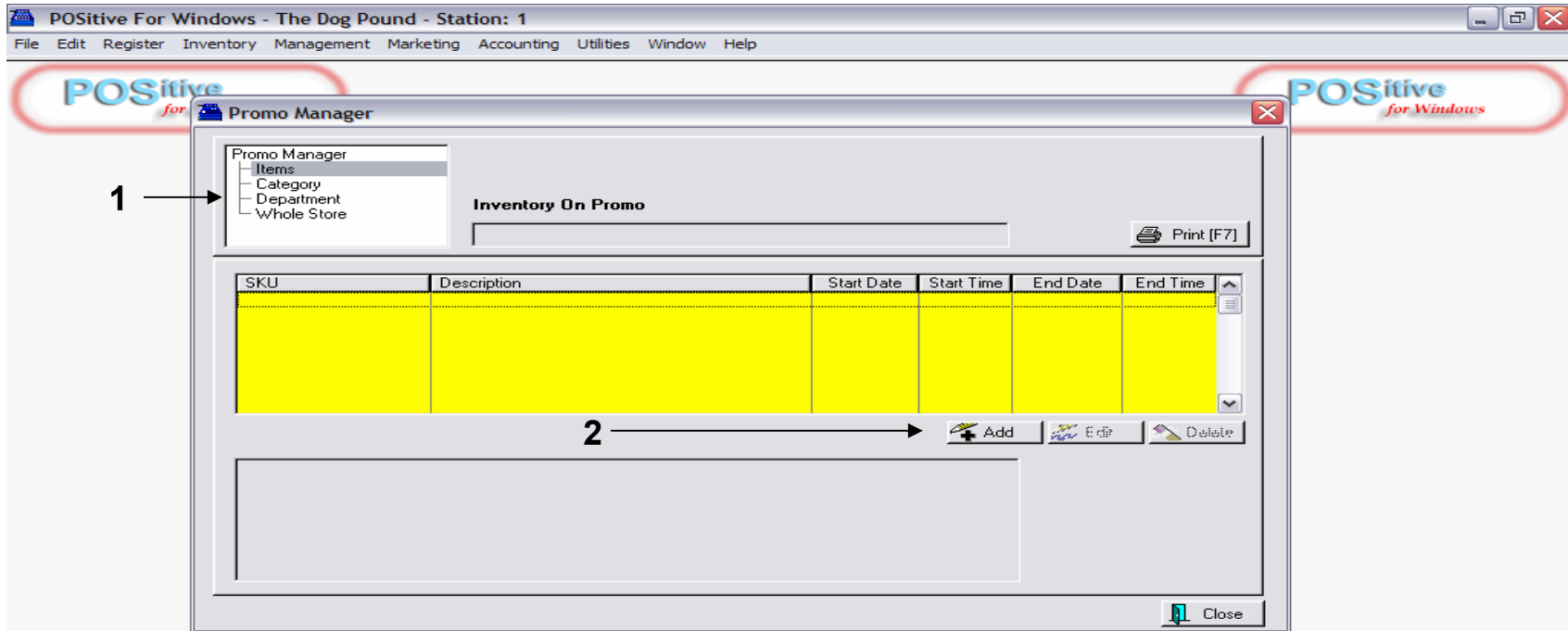
POSitive for Windows

POSitive for Windows

Profession Edition Multi-User | POS | V.4.3.3 | 11/28/2006 | 4:25 PM

Advance Inventory Features

1. To access Advance Inv. Features, go to Inventory Center (F4)
2. Double-Click, Promo Manager



Promo Manger

Promo Mgr. allows you to plan Promotional Events!

1. Choose to (\$ or % off) discount one Inv. Itemor.....
 - a Group of Items: Category, Department, Whole Store (% only)
2. For our training example, highlight Items and Click **ADD**

POSitive For Windows - The Dog Pound - Station: 1

File Edit Register Inventory Management Marketing Accounting Utilities Window Help

POSitive for Windows

Inventory List

Menu [ESC] Find [F3] Dept/Catg Filter[F8] Item Menu [F12] InfoBar

Dept: CANDY Catg: .25/Cents Candy Hide Detail [F11]

To Search, type the first few characters of the SKU Scan Mode

SKU> [F5]	Description [F6]	Our Price: [F7]	Reg. Price
1222	WINTERFRESH GUM	0.25	0.25
15151	TEST SWEATSHIRT BLACK/LARGE	13.00	13.00
45545445	DIET PEPSI 200Z BTL	1.00	1.00
AA	APPAREL MISC*****	0.00	0.00
B1	RED BALLOON	0.50	0.50
B2	BLUE BALLOON	0.50	0.50
B3	WHITE BALLOON	0.50	0.50

Select UDE Copy Add Edit Delete

Start Date End Date

Add Edit Delete

Notes General Pricing Stock Vendors Links Promos Price Breaks

Close

Stock ^SKUs Pic Icons

In Stock	140
Held	0
Pre-Sold	0
Available	140
On Order	0
Committed	0
For Kits	0
Extra	0
Due	0
Units Per	24

^Bin Maintenance

Promos Actions Status

Current Promos: None

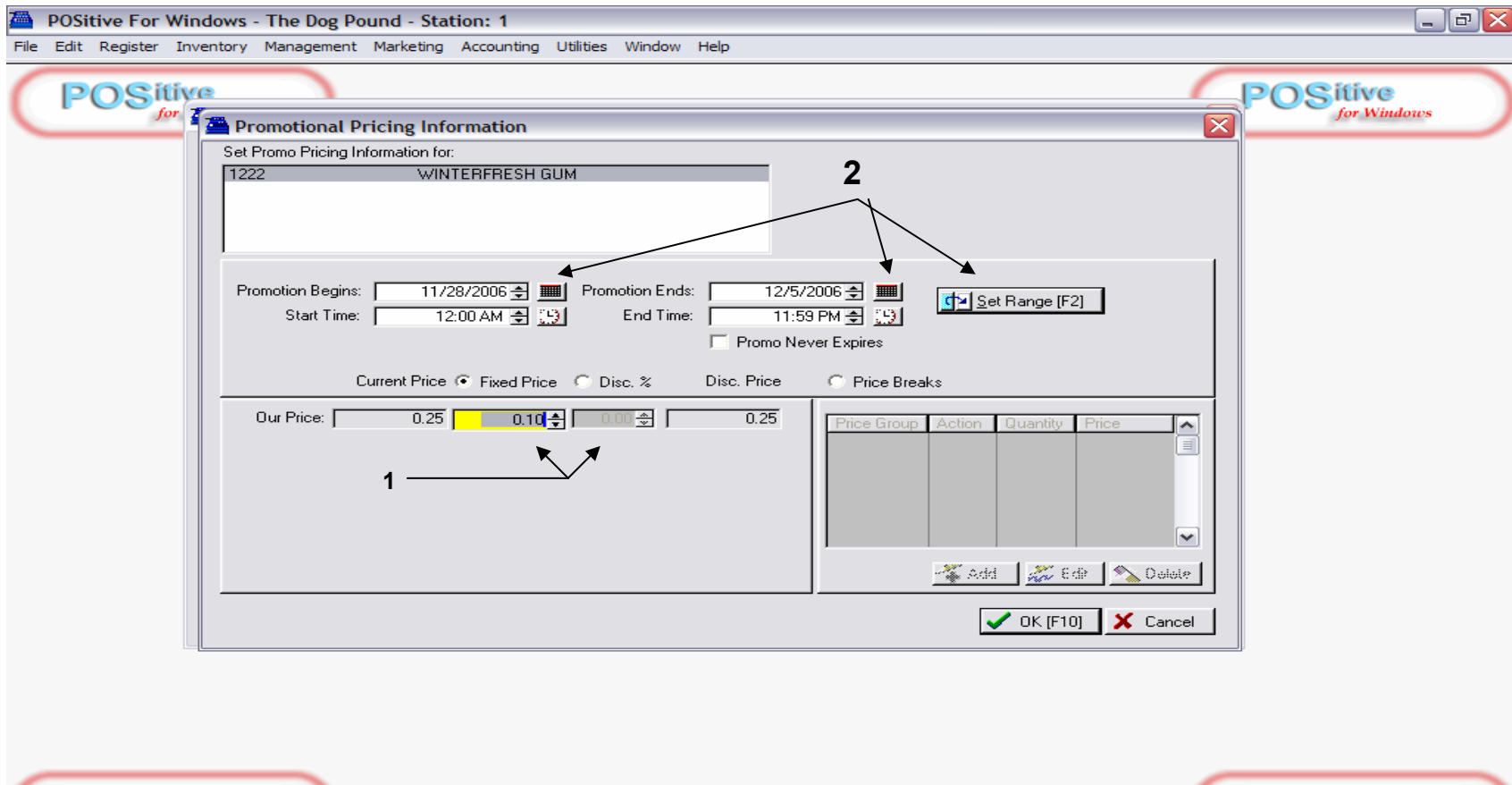
POSitive for Windows

POSitive for Windows

Browsing Records Profession Edition Multi-User POS V.4.3.3 11/28/2006 5:45 PM

You can choose an item on the Inv. List to promote! (Barcode Scan it to find-it fast !

1. Choose Select



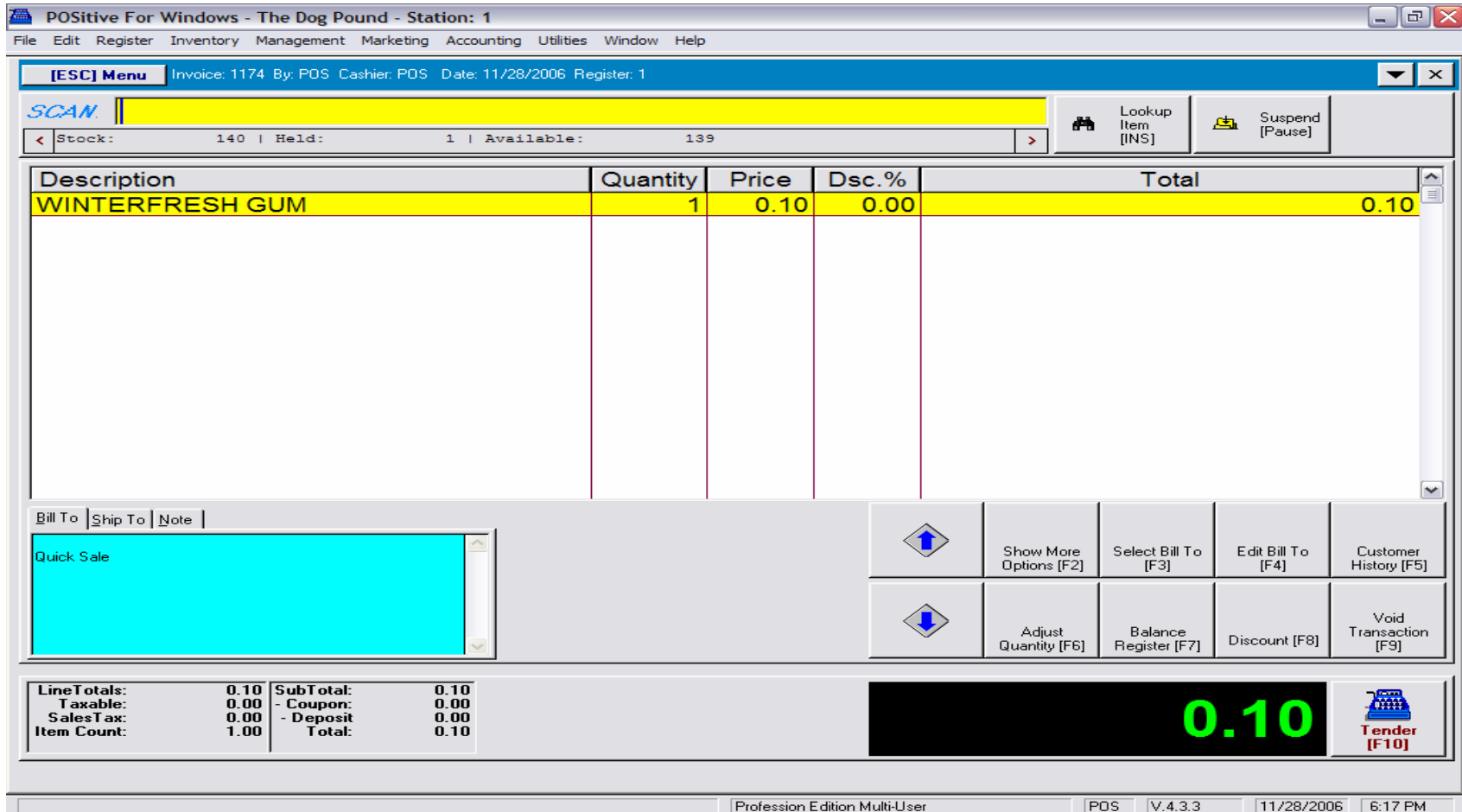
Let's plan our Promo-Pricing Strategy:

1. Choose a **Promo Price (FIXED)** or a **Discount %**
2. Choose the **date range of your Promo**
 - By Specific Calendar Date (Promo-Begins & Promo-Ends)
 - Set Range (Fast way to select: This Week, Next Week, Next Month, etc....)
3. **Click OK (F10) to SAVE Promo.** Make sure you sales test your promo during the selected date range.

The screenshot shows the POSITIVE for Windows Inventory List window. The window title is "Inventory List" and it displays a list of items with columns for SKU, Description, Our Price, and Reg. Price. The "Our Price" for the selected item (SKU B3) is highlighted in red, indicating a sale price. Below the list, there is a detailed view of the promotion, showing the start and end dates, the discount percentage, and the expiration time. The "Promo" tab is selected at the bottom of the window.

1. Once you programmed a Promo the item will show a Red Sale Price in the Inv. List.

2. Click Promo-Tab (below) and see the details of your Promo.



Your Promo Price will appear on the Sales Screen

⇒ During the date range that you selected. (.10/cents, Reg.: .25/cents)