

The screenshot shows the 'Manager Console' window for 'The Dog Pound' POS system. The top navigation bar includes icons for Register [F2], Management [F3], Inventory [F4], Purchase [F5], RMA [F6], and E-Commerce [F7]. The Inventory [F4] menu is expanded, showing a list of options: 1 Inventory, 2 Templates, 3 Matrix, 4 Coupon Manager, 5 Promo Manager, 6 Used Items Manager, ^1 Departments, ^2 Categories, ^3 Vendors, ^4 Vendor Inventory, ^5 Global Changes, ^6 Serial Number List, ^7 Quantity Equations, and ^8 Mix & Match. The 'Mix & Match' option is highlighted. A red circle highlights the Inventory icon in the top navigation bar, and an arrow points to the 'Mix & Match' option. The interface also displays a calendar for November 2006, a login status for 'POS', and a 'Positive Support Net' logo.

Advance Inventory Features

POSITIVE for Windows

POSITIVE for Windows

Profession Edition Multi-User | POS | V.4.3.3 | 11/28/2006 | 4:25 PM

1. To access Advance Inv. Features, go to Inventory Center (F4)
2. Double-Click, Mix & Match

POSitive For Windows - The Dog Pound - Station: 1

File Edit Register Inventory Management Marketing Accounting Utilities Window Help

POSitive for Windows

Mix & Match Manager

Description

SKU Description

1

Add Edit Delete

Group	Action	Quantity	Price

Add Edit Delete Add Remove

Close

Mix & Match

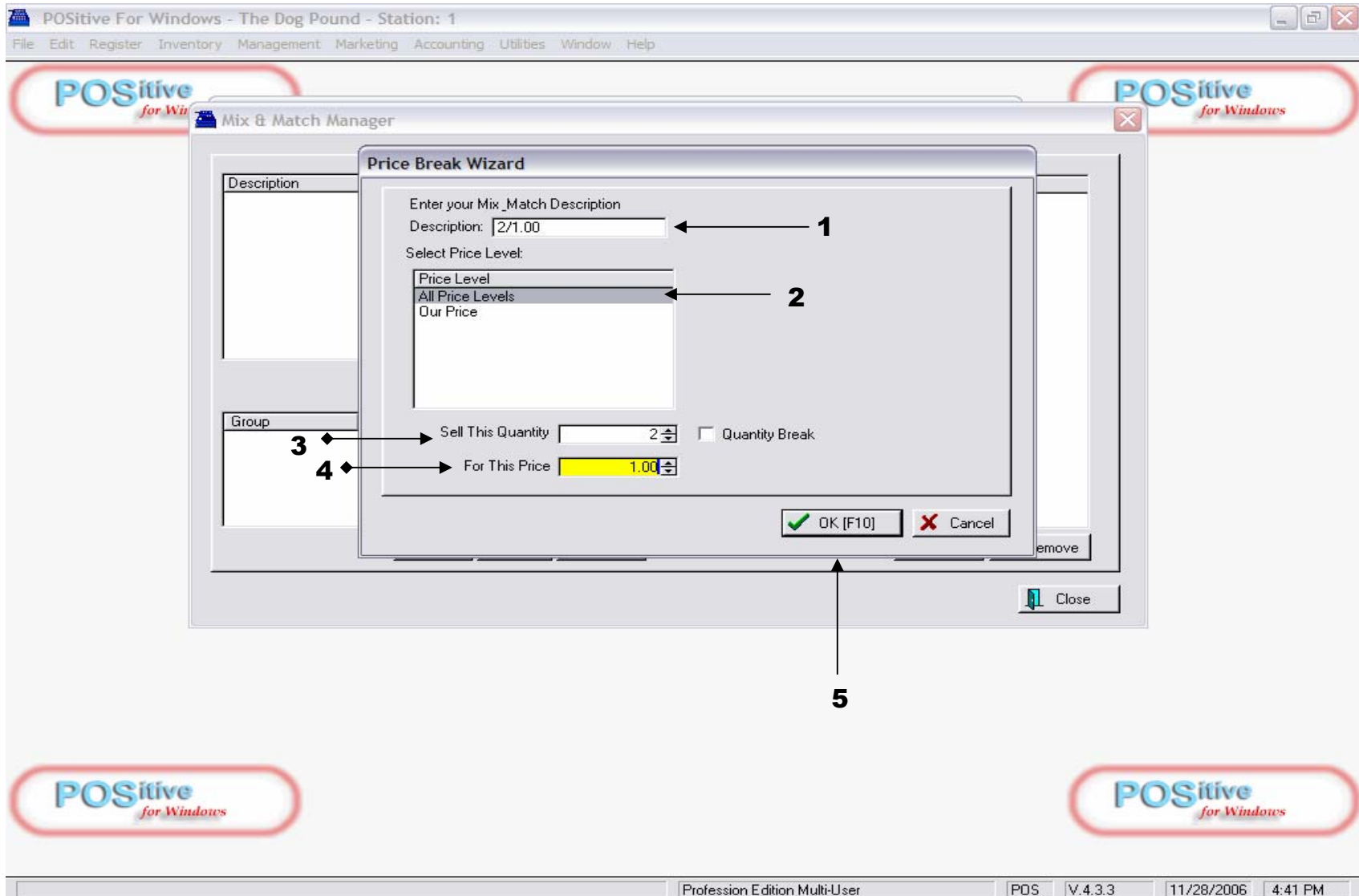
POSitive for Windows

POSitive for Windows

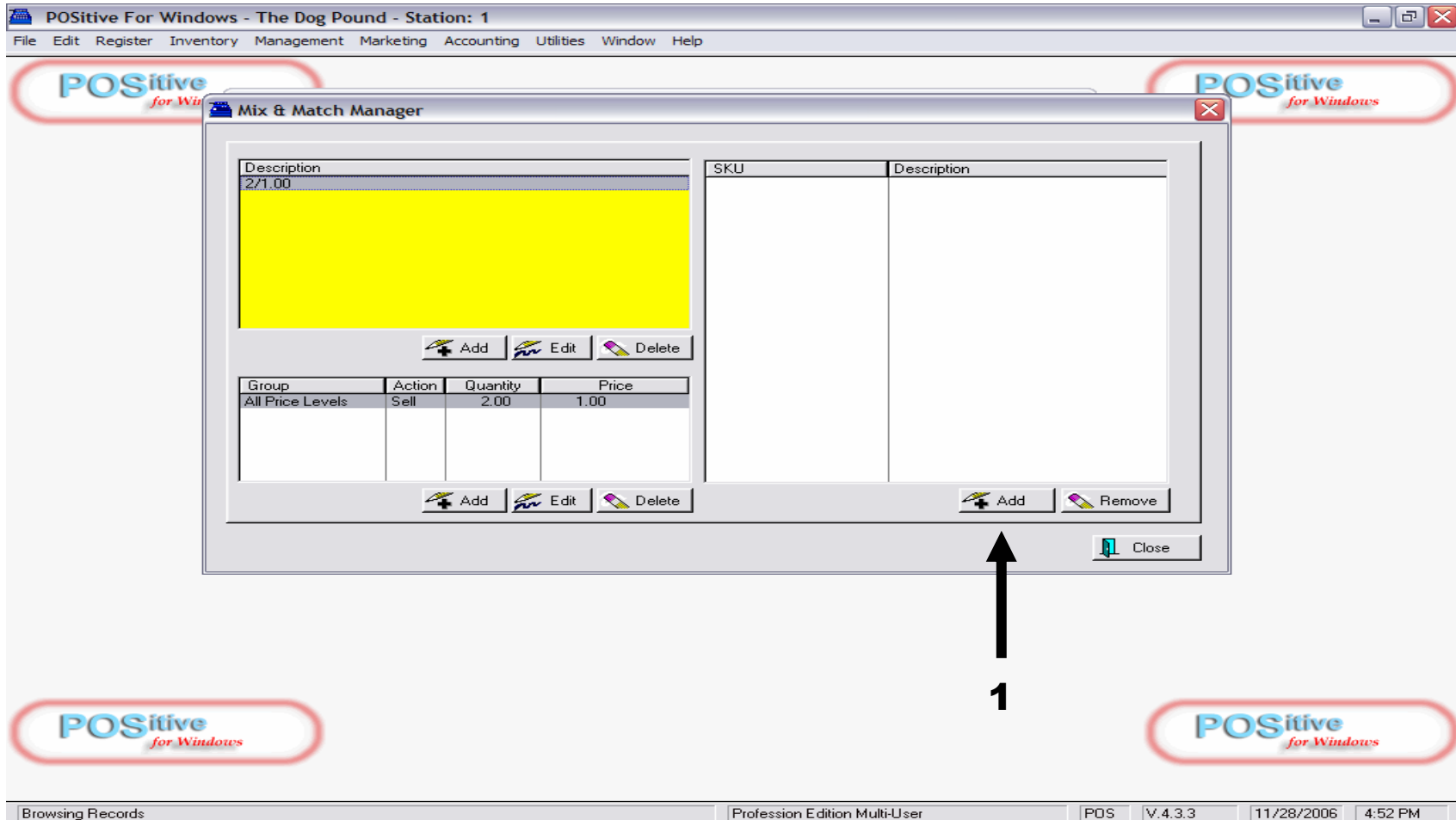
Browsing Records | Profession Edition Multi-User | POS | V.4.3.3 | 11/28/2006 | 4:36 PM

In Mix & Match Manager, you can group items into a price family.

1. Click Add to define your price group



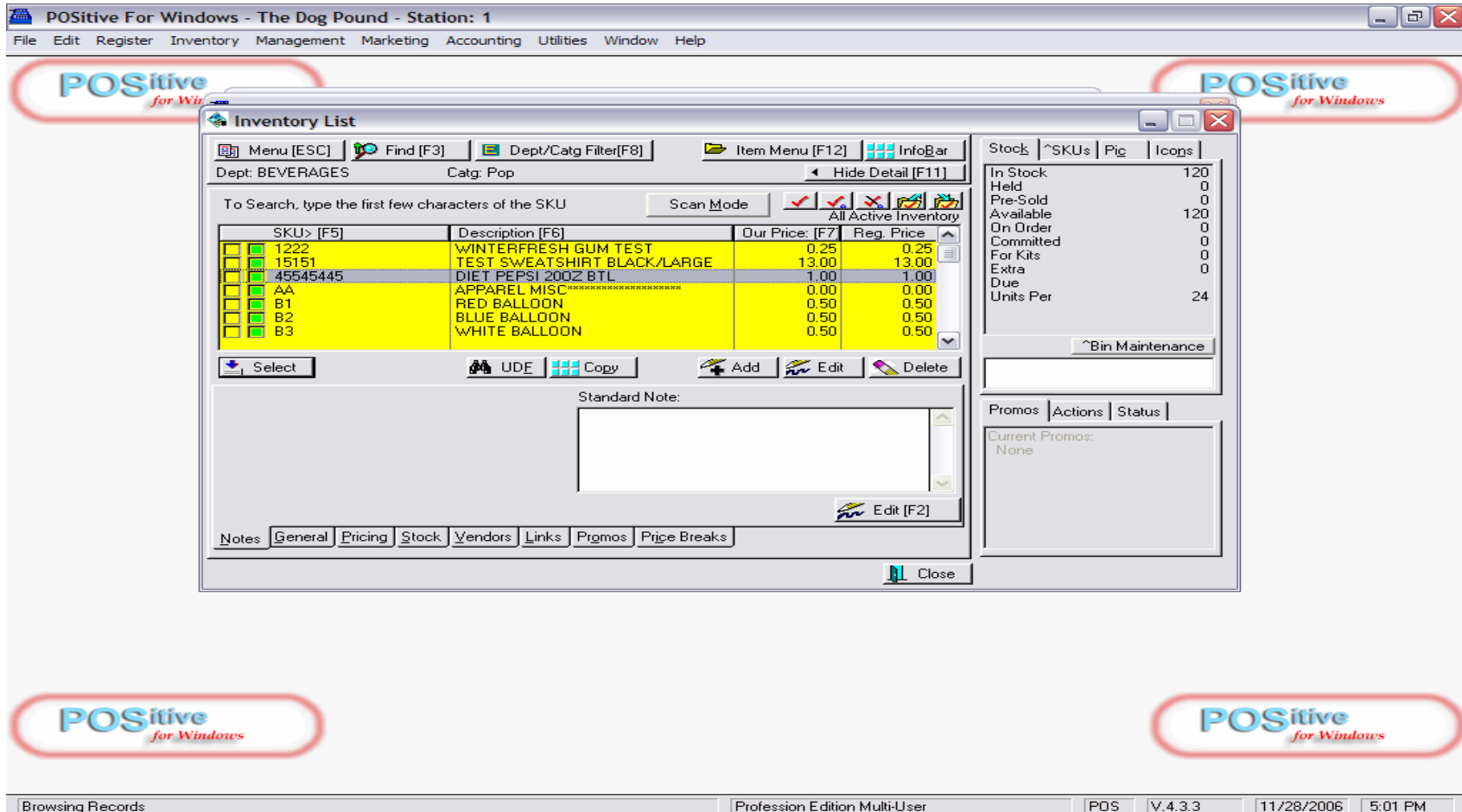
1. Insert your Price Group Name (2/\$, 3/\$, 4/\$....)
2. Choose all Price Levels
3. Sell QTY is the threshold level (2, 3, 4, etc...) which triggers a group price
4. Insert Group Price (need decimal here)
5. Click OK, to SAVE Price Group definition.



The Price Group has been saved (2/\$1.00)

1. Click ADD to browse & insert (SKUs) Inv. Items

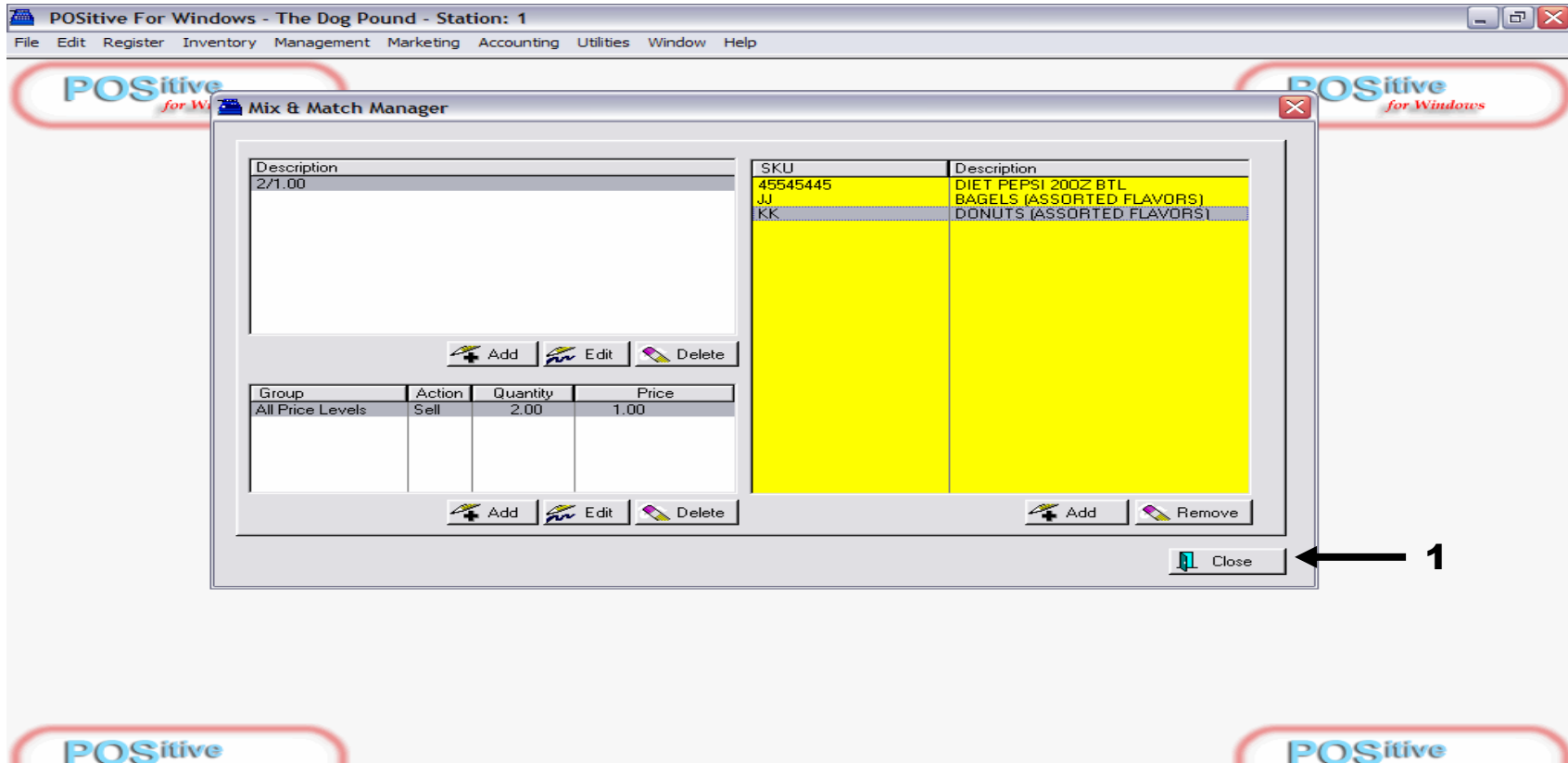
- It is best to scan the barcodes (or push a hot-key) of items you wish to **Price Group**



Upon clicking ADD, your Inventory List will appear

1. To Fast-Find an Inventory Item:

- It is best to scan the barcodes (or push a hot-key) of items you wish to Price Group



Here we have Price Grouped 3 items

- Cross-Merchandized Unlike Items. Display them together!
- Fast-Movers will help sell the Dogs! Make Price-Combo offers!
- Cashiers can encourage customers, “to buy one more and save”
- Mix-Match allows consumer to make independent, impulsive decisions!

1. Click **CLOSE** to save. Let's test the results on a Sales Screen!

POSitive For Windows - The Dog Pound - Station: 1

File Edit Register Inventory Management Marketing Accounting Utilities Window Help

[ESC] Menu Invoice: 1173 By: PDS Cashier: PDS Date: 11/28/2006 Register: 1

SCAN: [Yellow Bar]

Stock: 90 | Held: 3 | Available: 87

Description	Quantity	Price	Dsc.%	Total
BAGELS (ASSORTED FLAVORS)	2	2@1.00	0.00	1.00
BAGELS (ASSORTED FLAVORS)	1	0.75	0.00	0.75

Bill To | Ship To | Note |

Quick Sale

↑ Show More Options [F2] Select Bill To [F3] Edit Bill To [F4] Customer History [F5]

↓ Adjust Quantity [F6] Balance Register [F7] Discount [F8] Void Transaction [F9]

Line Totals:	1.75	Sub Total:	1.75
Taxable:	0.00	- Coupon:	0.00
Sales Tax:	0.00	- Deposit:	0.00
Item Count:	3.00	Total:	1.75

1.75 Tender [F10]

Profession Edition Multi-User PDS V.4.3.3 11/28/2006 5:14 PM

Here we have inserted the same item 3 times.

- Note that the Price Group (2/1.00), will work in multiples of 2
 - The odd QTY, will ring up at the reg. Price (.75/cents)
1. Provides a great opportunity for cashiers to sell more Quantities!

POSitive For Windows - The Dog Pound - Station: 1

File Edit Register Inventory Management Marketing Accounting Utilities Window Help

[ESC] Menu Invoice: 1173 By: POS Cashier: POS Date: 11/28/2006 Register: 1

SCAN

Stock: 120 | Held: 1 | Available: 119

Lookup Item [INS] Suspend [Pause]

Description	Quantity	Price	Dsc.%	Total
BAGELS (ASSORTED FLAVORS)	2	2@1.00	0.00	1.00
BAGELS (ASSORTED FLAVORS)	1	1@0.50	0.00	0.50
DIET PEPSI 20OZ BTL	1	1@0.50	0.00	0.50

Bill To | Ship To | Note

Quick Sale

Show More Options [F2] Select Bill To [F3] Edit Bill To [F4] Customer History [F5]

Adjust Quantity [F6] Balance Register [F7] Discount [F8] Void Transaction [F9]

Line Totals:	2.00	Sub Total:	2.00
Taxable:	0.00	- Coupon:	0.00
Sales Tax:	0.00	- Deposit:	0.00
Item Count:	4.00	Total:	2.00

2.00 Tender [F10]

Profession Edition Multi-User | POS | V.4.3.3 | 11/28/2006 | 5:21 PM

We have Matched 1 item (3 times) & Mixed 1 item (1 time)

- **Mix & Match is a powerful sales tool.**
- **Remember, 3 out of 4 purchases are unplanned (impulsive).**